



ODIHAM ART GROUP DEMONSTRATION REPORT

Hilary Dancer – Cityscape in Acrylics, 7th March 2020

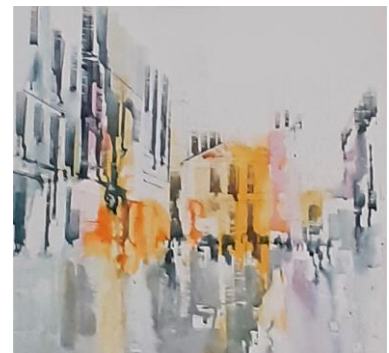
Hilary works primarily from photographs and she had already created a pencil drawing on canvas of London streets with St Pauls in the background. She particularly liked the scene as it had strong perspective lines and focal point, using a ruler to make sure the vanishing point was correct. After this formal start her style was very loose, interpreting the scene before her with vibrant colours and splashes of colour but always with the 'skeleton' of the image kept in mind.

To start she used a spatula to splash bright Indian Yellow acrylic ink across the centre of the image followed by a little orange, then she roughly marked the building on the left with a diluted blue black acrylic ink she mixes herself from Prussian Blue, Indigo and Black. She uses a large white ceramic tile for her pallet so she can pull the colour off easily with a palette knife or scraper.

Using a plastic glue spreader dipped in her blue-black mix Hilary made marks on the right hand side of the canvas which magically became people. Following that she softened the left hand side with water, allowing the colours to blend then dropped much diluted Magenta ink into small areas to add warmth. She did most of this work with a bent piece of plastic card – she said using cards and bits of plastic instead of brushes keeps her work loose and free.

She then applied a diluted blue acrylic ink wash across the sky with a small roller, saying it was important not to use too wet a mix or you get bubbles on the surface. Then more layers of acrylic ink - mixes of Dark Blue, Quinacridone Orange and Dark Green to make her greys are added to the painting with a palette knife, particularly around the shop entrances. For any fine work she uses Paint Marker pens that can be filled with the ink of choice. Using one of these filled with Paynes Grey acrylic ink she darkened the outlines of shops on the left. Following that she mixed White acrylic paint with a hint of yellow to 'push back' some of the stronger yellows and blacks across the painting. She then used another white ink pen to show road markings and shop fronts, drawing the eye to the focal point of St Pauls.

Hilary stressed that she makes marks because she feels it's right for that area of the painting, even though it often doesn't reflect her source photograph, this attitude keeps the work loose and in her own very individual style. She also relishes the way acrylics dry so quickly, allowing you to go back over areas after a very short time.



Hilary finished by roughly sketching in slight details but only a few, as she felt they were not needed.

The final result was a superb rendition of a London scene, glowing with colour and life and much appreciated by the large audience of members and guests.

